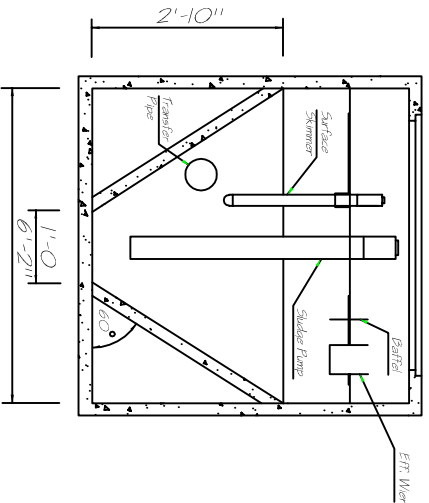
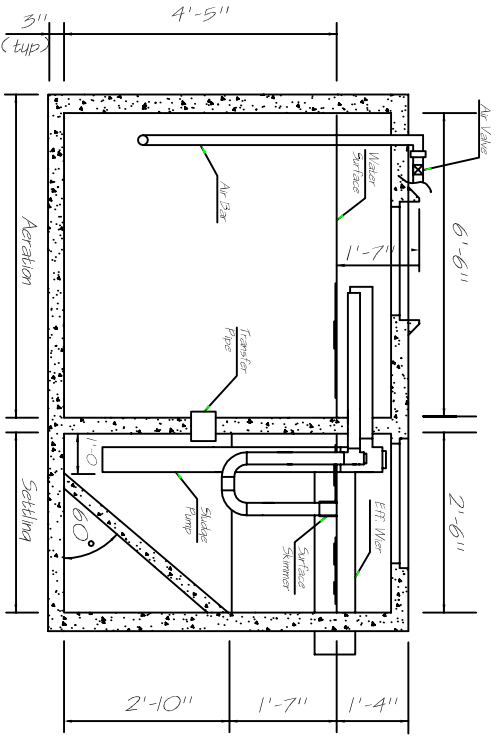
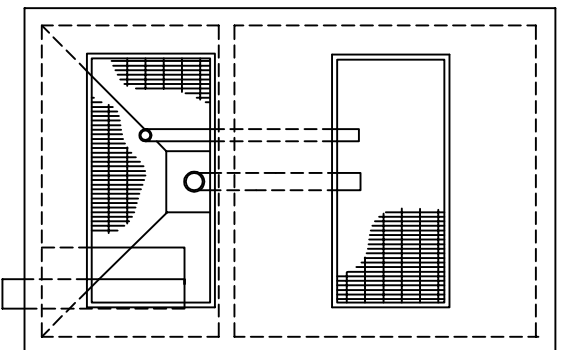


UNIT CAPACITIES	
AERATION Volume	SETTLING Volume
1,000 gpd	452 gpd



Sewer Treatment Plant
1,000 Gallon Per Day

WASTEWATER TREATMENT OF LOUISIANA, INC.

17188 Airline Hwy Suite M-157, Prairieville, LA. 70769
PH 225-673-3156

by: THOMAS F. PERTUIT, P.E.