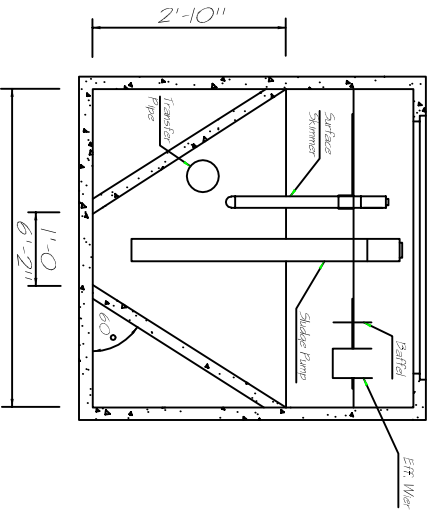
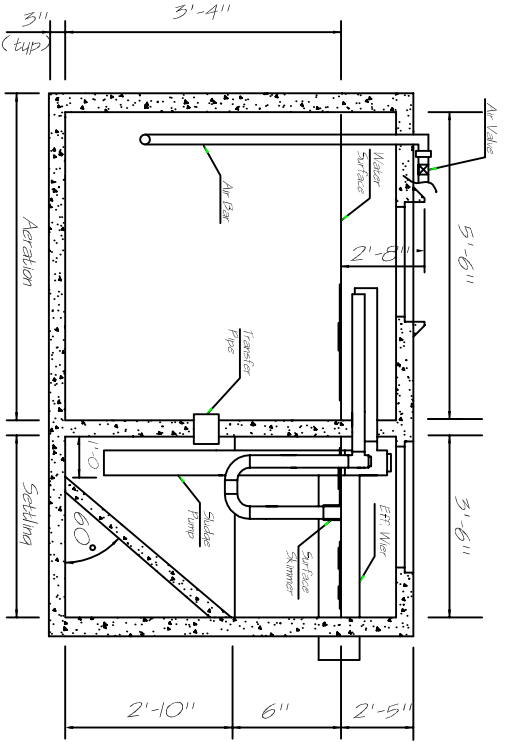
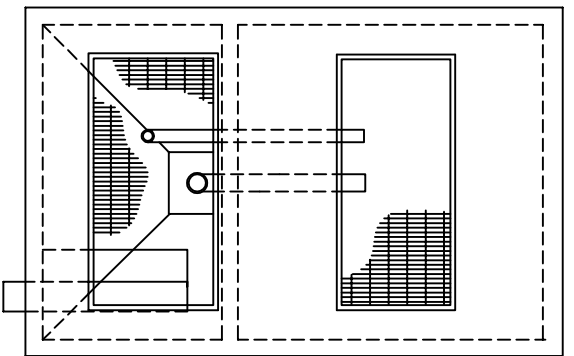


UNIT CAPACITIES	
AERATION	SETTLING
Volume	Volume
750 gpd	535 gpd



WASTEWATER TREATMENT OF LOUISIANA, INC.

17188 Airline Hwy Suite M-157, Prairieville, LA 70769
PH 225-673-3156

BY: THOMAS F. PERTUIT, P.E.

Sewer Treatment Plant

750 Gallon Per Day